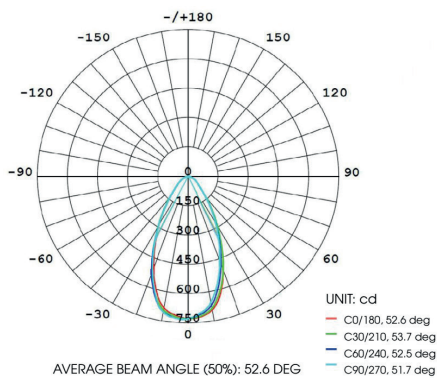


HARLED SOLO

A fully fire rated 10W IP65 downlight compliant with BS476-22. It is dimmable and has three magnetic interchangeable bezels all included: matte white, polished chrome and satin chrome. Colour output is switchable between warm white, cool white and daylight.



Light Distribution



KEY FEATURES

- Interchangeable magnetic bezels
- All three bezels included (Polished chrome, Satin Chrome, Matte White)
- Three Colour Outputs - 3000K | 4000K | 6000K
- Trailing-edge dimmable (20 fittings max)
- IP65 protection, suitable for bathroom zones 1 and 2
- Loop in and loop out terminal
- COB lamp type
- Easy connector plug included
- 10W delivering 950 lumens
- Fire rated 30 | 60 | 90 min, compliant to BS476-22
- Part L Building Regulations

Harled Solo Options

Colour Temperature (switch behind bezel)



Bezel (all included)



Matte White



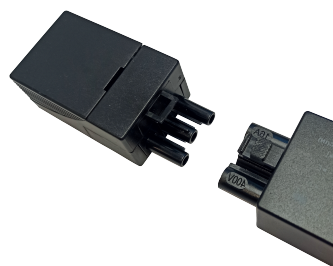
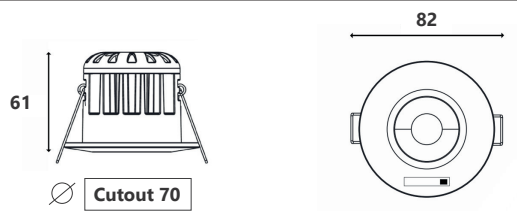
Polished Chrome



Satin Chrome

Order Code: HAR-SOLO-10CCT

Dimensions (mm)



Remove magnetic bezel and use switch to choose from WW (3000K), CW (4000K), DL (6000K)



DETAILS

Warranty	5 years
Applications	Interior
Certification(s)	UKCA, CE
Colour Finish	Matte White Polished Chrome Satin Chrome
Luminaire Fixing	Recessed
Construction Material	Aluminium heat sink, steel fascia
Diffuser Type	Polycarbonate
Unit Weight (kg)	0.34
Voltage Range	AC230, 50-60Hz
Power Factor	>0.90
Inrush Current	<30A
Running Current	DC71mA
Protection Class IEC	Class II
Wattage	10W
Lumens	950
Efficacy	~95 Lm/W
Operating Temperature	-20°C to +45°C
Dimming	Trailing edge (20 fittings max)
Beam Angle	40°
Colour Temp	3000K 4000K 6000K
Operating Hours	>50000
Building Regs	Part L
CRI	>80 Ra
IP Rating	IP65
Macadam Ellipse	≤2.8 sdcM
L70 B10	50,000 hours

LED Chips EPISTAR

Part L compliant of UK Building Regulations, Part B Compliant BS476 Parts 21 and 22. Suitable for 30 min 600mm/15mm single layer Standard Wallboard, 60 min 600mm/12.5mm twin layer Fireboard and 90 minute 450mm/15mm twin layer fireboard ceilings.